

Change your Windows 10 Login Password

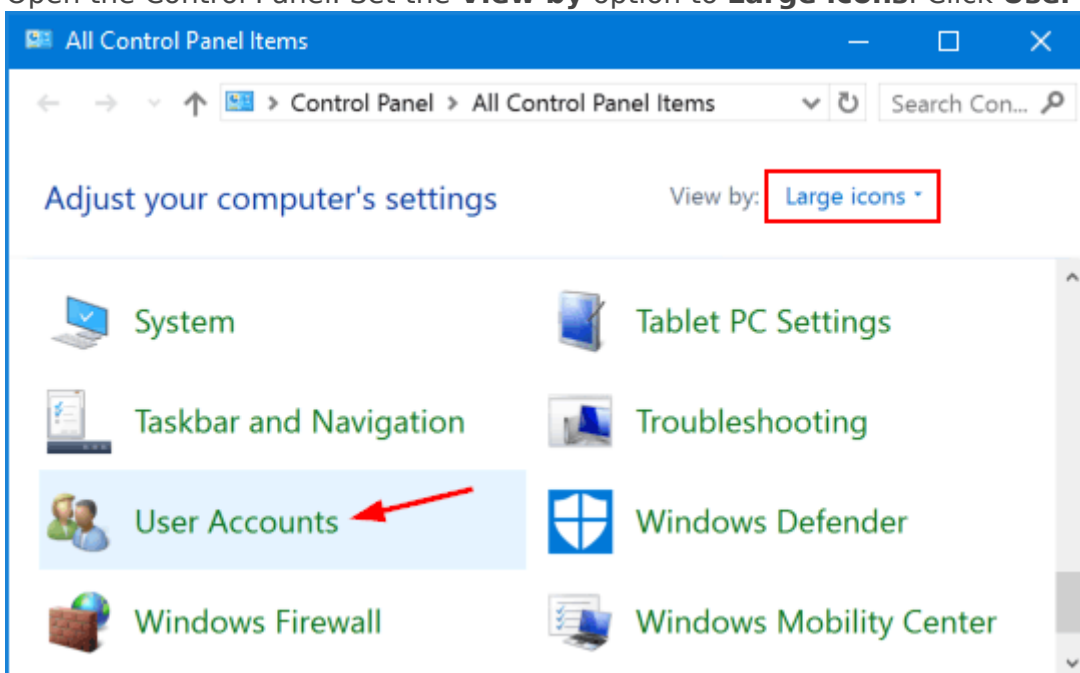
Windows 10

If you use a Microsoft account on your Windows 10 computer, you need to follow the instructions in Method 2 of this guide (or sign into the Microsoft online website) to change your password.

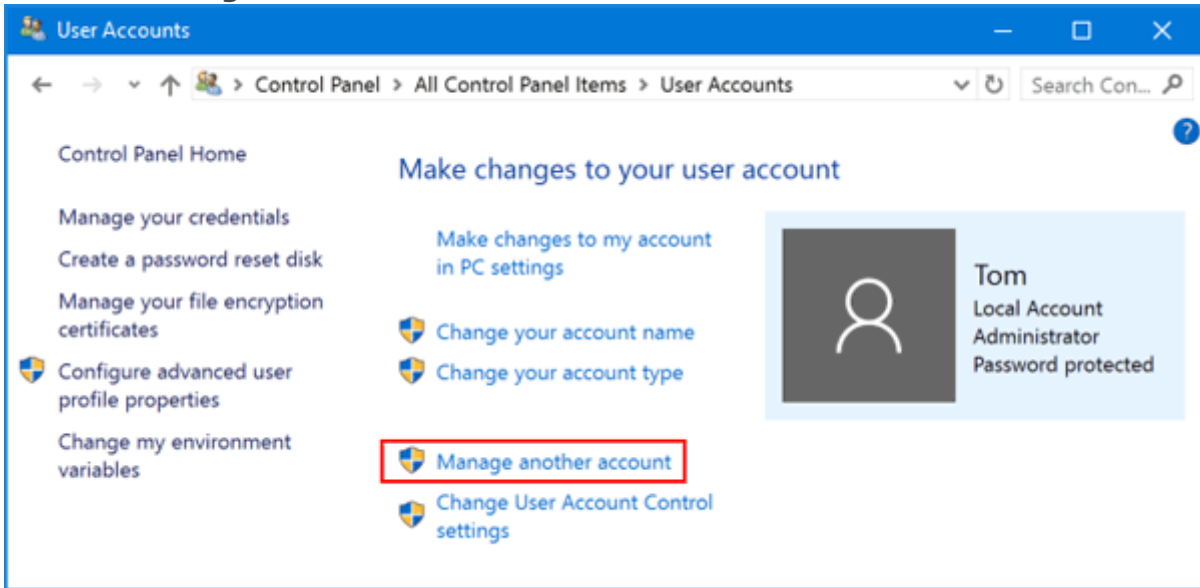
Method 1:

Change the Windows 10 Password from Control Panel

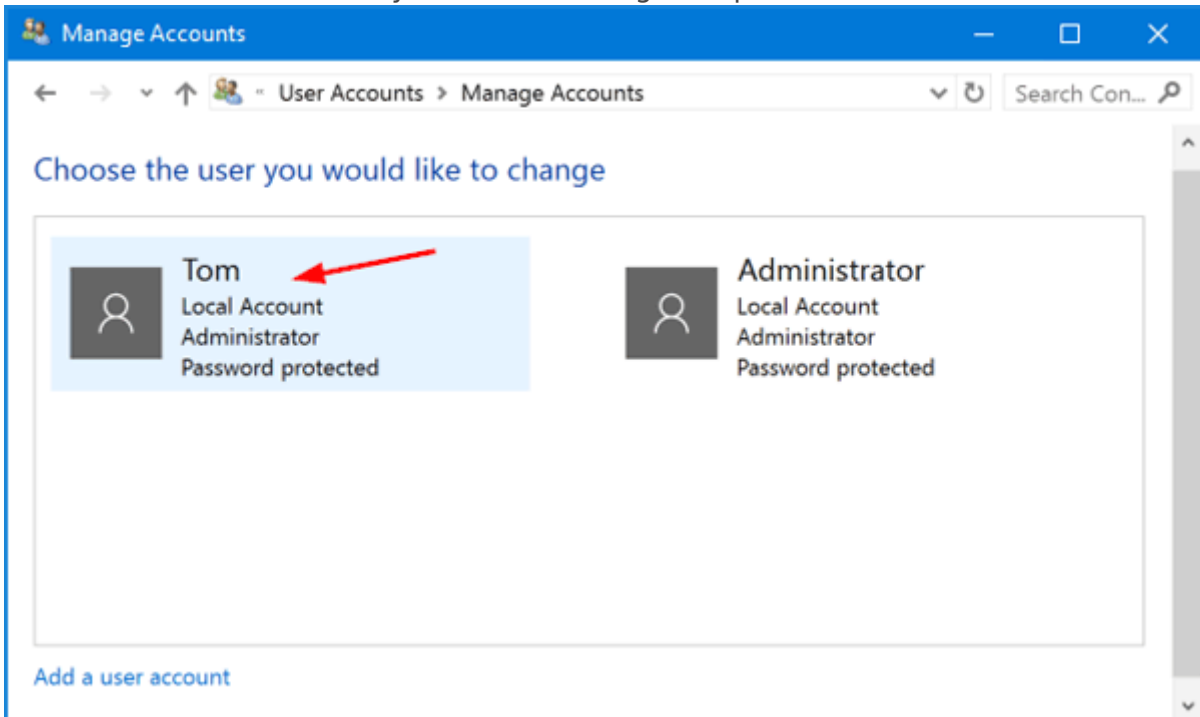
1. Open the Control Panel. Set the **View by** option to **Large icons**. Click **User Accounts**.



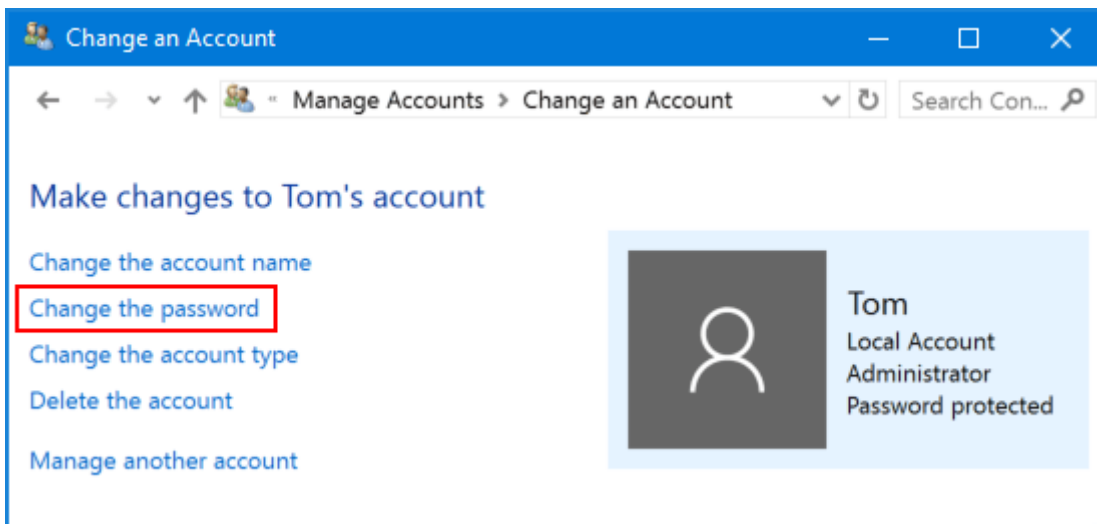
2. Click the **Manage another account** link.



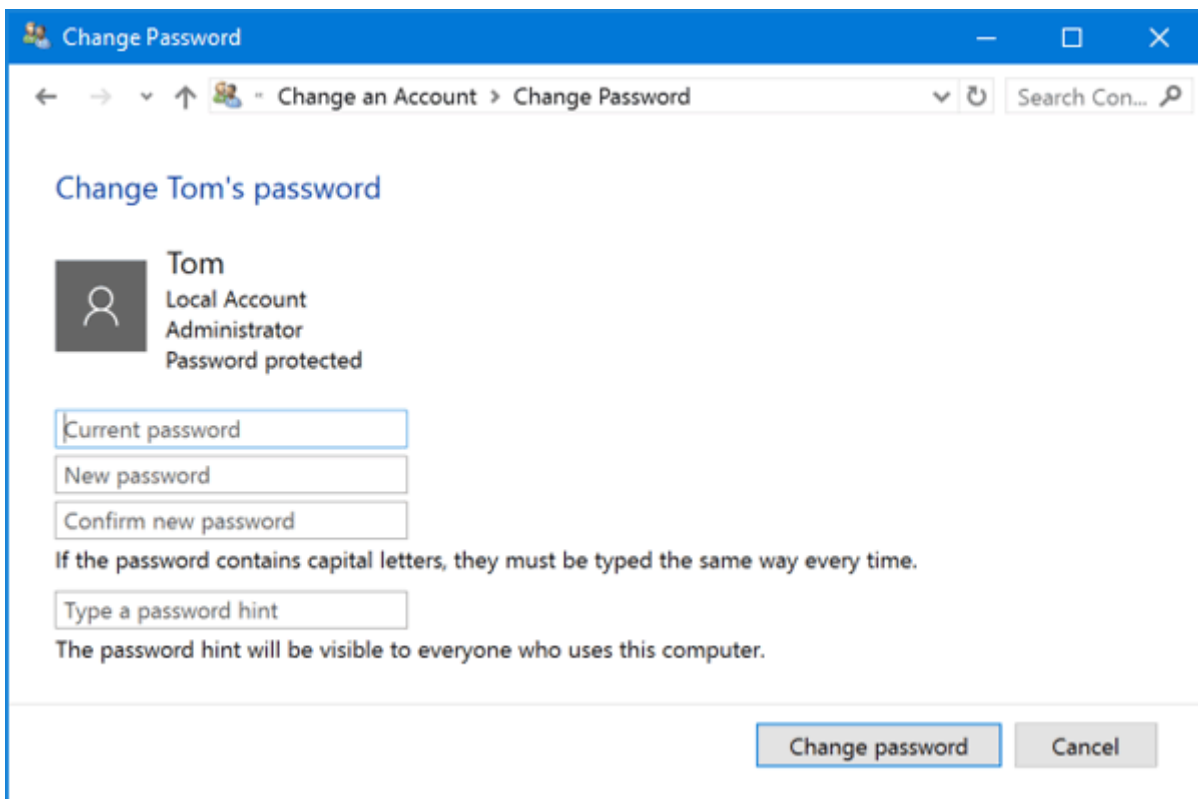
3. Click the user account that you want to change the password for.



4. On the next screen, click the **Change the password** option.



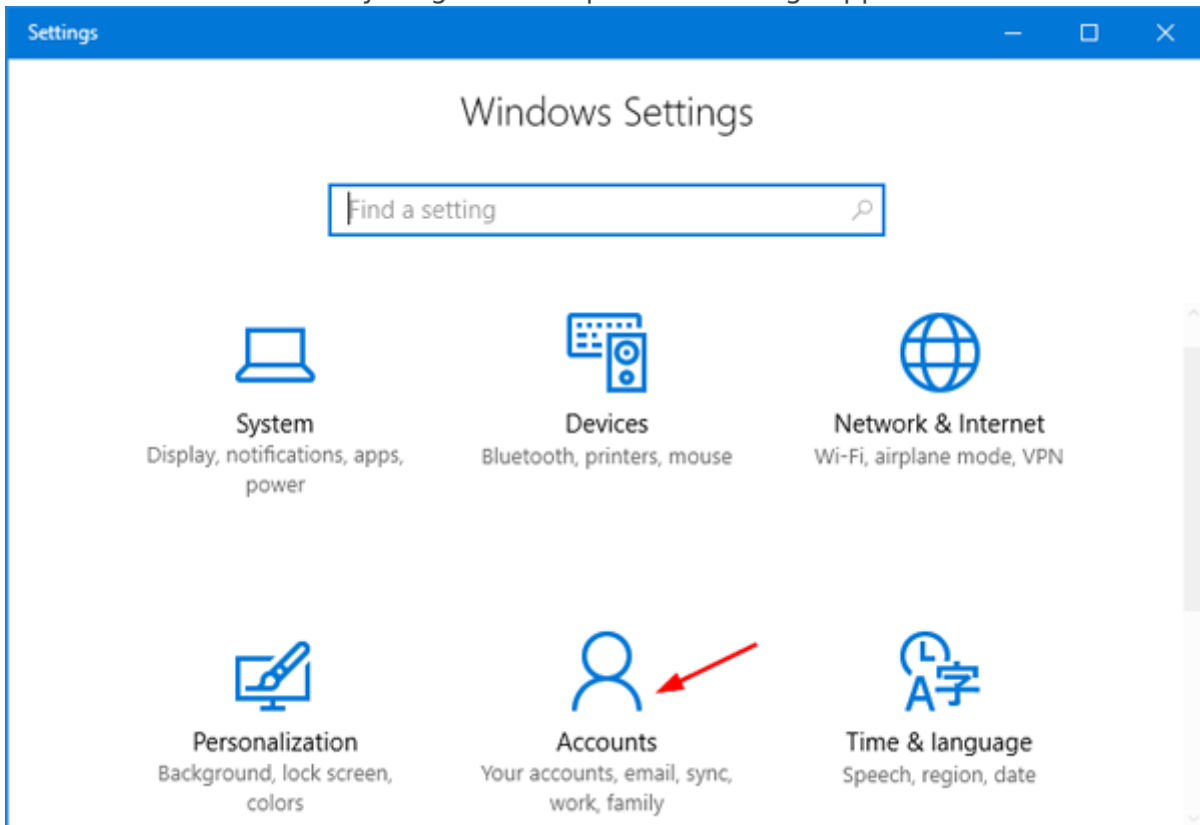
5. Type in your current password and then enter the new one you wish to use. **Click Change password.**



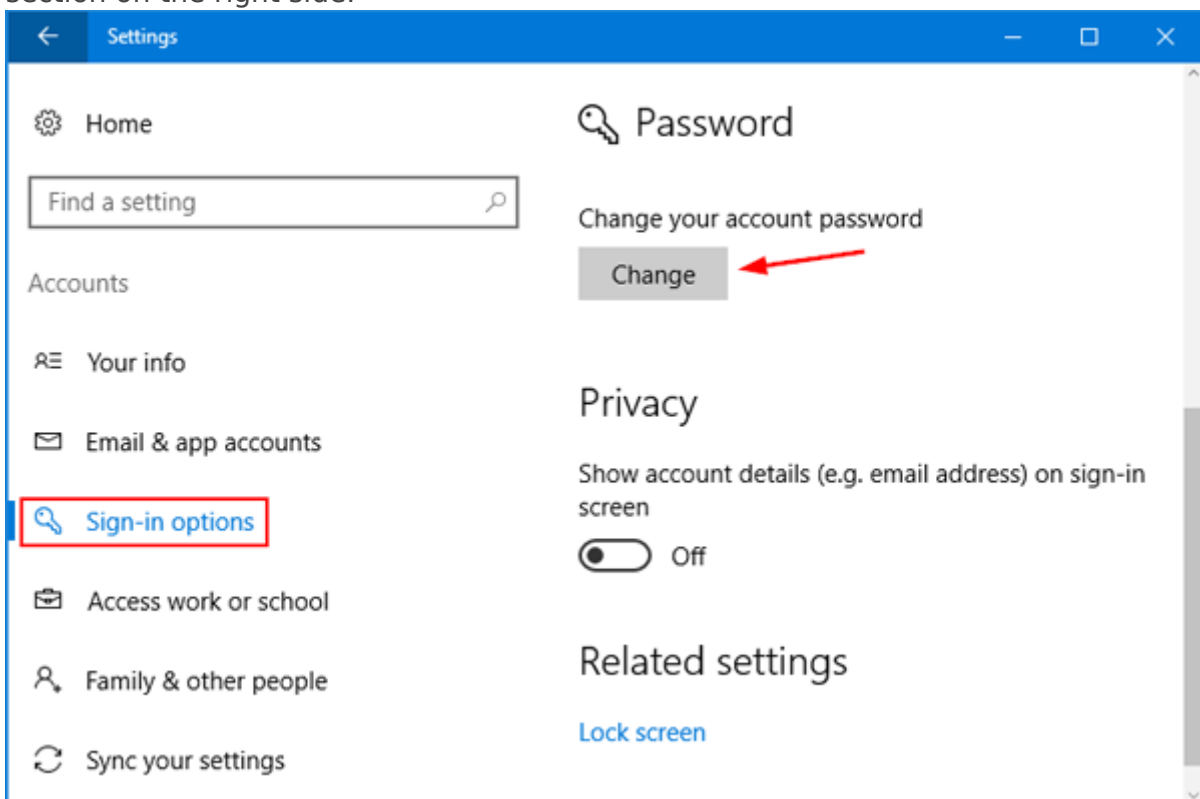
Method 2:

Change the Windows 10 Password from PC Settings

1. Press the Windows + I keys together to open the Settings app. Click **Accounts**.



2. Click **Sign-in options** on the left side, and click the **Change** button under Password section on the right side.



3. Enter your current password and click **Next**.

Change your password

First, confirm your current password.



Tom

Current password

Next

Cancel

4. Enter and reenter a new password, and set a password hint. Click **Next**.

← Change your password

New password

Reenter password

Password hint

Next

Cancel

